

Series image - Reference only

EU RoHS

**RoHS Compliant by Exemption**

China RoHS



**Search Parts in this Series**

88768 Series

**Part Number:** **0887683500**

**Status:** **Active** **Overview:** HDMI High Definition Multimedia Interface

**Description:** HDMI\* to DVI-Digital Cable Assembly, 28 AWG, 1.0m (3.28' )  
Length

### General

Product Family	Cable Assemblies
Series	<u>88768</u>
Connector to Connector	HDMI* to DVI-Digital
Overview	<u>HDMI High Definition Multimedia Interface</u>
Product Name	HDMI*

### Physical

Cable Length	1.0m (3.28' )
Circuits (Loaded)	19
Color - Resin	Black
Color - Resin	Natural
Gender	Male-Male
Lock to Mating Part	Yes
Material - Metal	High Performance Alloy (HPA)
Material - Metal	Phosphor Bronze
Material - Plating Mating	Gold
Material - Plating Termination	Tin
Material - Resin	High Temperature Thermoplastic
Material - Resin	Low Density Polyethylene
Material - Resin	Polyester
Packaging Type	Bag
Pitch - Mating Interface (in)	0.039 In
Pitch - Mating Interface (mm)	1.00 mm

Plating min: Mating (uin)	10
Plating min: Mating (uin)	32
Plating min: Mating (um)	0.25
Plating min: Mating (um)	0.8
Plating min: Termination (uin)	150
Plating min: Termination (uin)	50.8
Plating min: Termination (um)	1.27
Plating min: Termination (um)	3.75
Single Ended	No
Termination Interface: Style	Solder or Weld
Termination Interface: Style	Through Hole
Wire Insulation Diameter	N/A
Wire Size AWG	28
Wire/Cable Type	Round

### Electrical

Current - Maximum	0.500 Amp
Impedance	100 ohms
Shielded	Yes
Voltage - Maximum	40V

### Material Info

#### Reference - Drawing Numbers

Product Specification	PS-88768-001
Sales Drawing	SD-88768-3500
Sales Drawing	SD-887683500
Sales Drawing	SD-887683510
Sales Drawing	SD-887683520
Sales Drawing	SD-887683530
Sales Drawing	SD887683500

\*High Definition Multimedia Interface and HDMI are trademarks of HDMI Licensing, LLC.

7 6 5 4 3 2 1

E

D

C

B

A

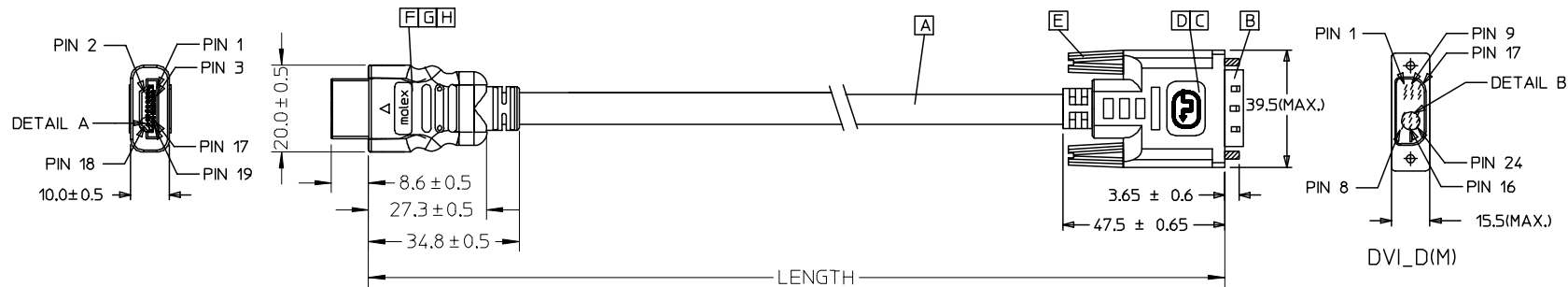
E

D

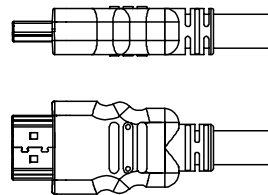
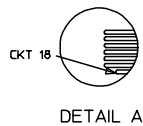
C

B

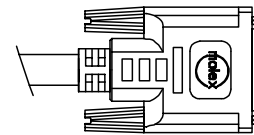
A



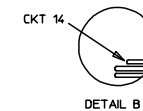
HDMI(M)



BACK SIDE



BACK SIDE



DETAIL B

88768-3530	HDMI TO DVI-D(M) CABLE ASS'Y.5M	5000 ± 100	BLACK	7.3MM(TMDS - AWG#28)	887808276
88768-3520	HDMI TO DVI-D(M) CABLE ASS'Y.3M	3000 ± 80	BLACK	7.3MM(TMDS - AWG#28)	887808276
88768-3510	HDMI TO DVI-D(M) CABLE ASS'Y.2M	2000 ± 60	BLACK	7.3MM(TMDS - AWG#28)	887808276
88768-3500	HDMI TO DVI-D(M) CABLE ASS'Y.1M	1000 ± 30	BLACK	7.3MM(TMDS - AWG#28)	887808276
MX P/N	DESCRIPTION	LENGTH	CABLE COLOR	CABLE OD	CABLE P/N

ENTER DESCRIPTION EC NO: DG2006-0144 DRWN: JFZHENG CHKD: APPR: DQLUO	QUALITY SYMBOLS ▽=0 ◻=0	GENERAL TOLERANCES (UNLESS SPECIFIED)		DIMENSION STYLE MM ONLY		SCALE ---	DESIGN UNITS METRIC	THIRD ANGLE PROJECTION	
			mm	INCH	DRAWN BY	DATE	#28 HDMI TO DVI 1M CABLE ASS'Y		
		4 PLACES	±---	±---	JFZHENG	2005/12/26			
		3 PLACES	±---	±---	CHECKED BY	DATE			
2 PLACES	±---	±---	JFZHENG	2005/12/26	MOLEX INCORPORATED				
1 PLACE	±---	±---	APPROVED BY	DATE					
		ANGULAR ±---°	DQLUO	2005/12/26	MATERIAL NO. ENTER PART		DOCUMENT NO. SD-887683500	SHEET NO. 1 OF 00	
DRAFT WHERE APPLICABLE MUST REMAIN WITHIN DIMENSIONS				SIZE A 4	THIS DRAWING CONTAINS INFORMATION THAT IS PROPRIETARY TO MOLEX INCORPORATED AND SHOULD NOT BE USED WITHOUT WRITTEN PERMISSION				

NOTE:

1. OVERMOLD SPECIFICATION:
  - 1.1 DVI BOOT MOLDED SNOW WHITE PVC RESIN 887800076,UL94V-0.
  - 1.2 HDMI INNERMOLD WITH BK PVC 887800019.  
HDMI OVERMOLD WITH PVC 887800150
  - 1.3 HDMI DUST COVER WITH PE 887800008

2. MECHANICAL SPECIFICATION
  - 2.1 CABLE SHOULD STAND THE PULL FORCE 89-111N FOR 30 SECONDS WITH NO VISIBLE TERMINATION DAMAGE.
  - 2.2 CABLE SHOULD PASS THE FLEX TEST IN 100 CYCLES AT EACH OF PLANES, PER EIA 364-41, CONDITION 1.
3. PRODUCT ELECTRICAL SPECIFICATION:
  - 3.1 DIELECTRIC STRENGTH.
  - 3.2 INSULATION RESISTANCE.
  - 3.3 CONDUCTIVE RESISTANCE.
  - 3.4 TMDS Signals Time Domain Impedence
  - 3.5 TMDS Signals Time Domain Crosstalk:FEXT
  - 3.6 TMDS Signals Skew
  - 3.7 Attenuation

REFER TO ES-002 ELECTRICAL SPECIFICATION FOR DETAILS.

4. CABLE CONSTRUCTION(CABLE  
(AWG#28\*1P+D)\*4 + AWG#28\*1P + AWG#28\*3C, 7.3MMOD
5. DVI CONNECTOR SPECIFICATION(DVI
  - 5.1 REFER TO PRODUCT SPEC. PS74320-001
  - 5.2 CONTACT PLATING: AU FLASH.
6. THIS PRODUCT MUST MEET ROHS COMPLIANCE.

SHIELD	SHIELD	OVERALL SHIELD	GROUND
PIN 19	PIN 16	WHITE	HOT PLUG DETECT
PIN 18	PIN 14	YELLOW	POWER +5V
PIN 17	PIN 15	ORANGE	GROUND(+5V&DDC)
PIN 16	PIN 7	RED	DDC DATA(SDA)
PIN 15	PIN 6	VIOLET	DDC CLOCK(SCL)
PIN 12	PIN 24	WHITE	TMDS CLOCK-
PIN 11	PIN 22	BRAID	TMDS CLOCK SHIELD
PIN 10	PIN 23	BROWN	TMDS CLOCK+
PIN 9	PIN 17	WHITE	TMDS DATA 0-
PIN 8	PIN 19	BRAID	TMDS DATA 0 SHIELD
PIN 7	PIN 18	BLUE	TMDS DATA 0+
PIN 6	PIN 9	WHITE	TMDS DATA 1-
PIN 5	PIN 11	BRAID	TMDS DATA 1 SHIELD
PIN 4	PIN 10	GREEN	TMDS DATA 1+
PIN 3	PIN 1	WHITE	TMDS DATA 2-
PIN 2	PIN 3	BRAID	TMDS DATA 2 SHIELD
PIN 1	PIN 2	RED	TMDS DATA 2+
HDMI	DVI-D	COLOR	CABLE FUNCTION

ITEM	DESCRIPTION	QTY.
H	HDMI METAL PLATED 47152-6009	1
G	HDMI METAL CAN 47152-4001	1
F	HDMI HOUSING ASSY' 47152-1100	1
E	DVI THUMB SCREW 887806077	2
D	PCB 887899569/887899570	1
C	ONE BODY CAN 887899392	1
B	DVI_D SINGLE CHANNEL G/F CONNECTOR 743230001	1
A	DVI SINGLE LINK CABLE (SEE TABLE)	1

ENTER DESCRIPTION EC NO: DG2006-0144 DRWN: JFZHENG CHKD: APPR: DQLUO	2005/12/27 2005/12/30 2006/01/16	QUALITY SYMBOLS ▽=0 ▽=5	GENERAL TOLERANCES (UNLESS SPECIFIED)		DIMENSION STYLE MM ONLY		SCALE ---	DESIGN UNITS METRIC	THIRD ANGLE PROJECTION		
				mm	INCH	DRAWN BY JFZHENG	DATE 2005/12/26	TITLE #28 HDMI TO DVI 1M CABLE ASS'Y			
			4 PLACES	±---	±---	CHECKED BY JFZHENG	DATE 2005/12/26				
			3 PLACES	±---	±---	APPROVED BY DQLUO	DATE 2005/12/26	MATERIAL NO. 887683500			
2 PLACES	±---	±---	ANGULAR ±---°		DOCUMENT NO. SD-887683500		SHEET NO. 2 OF 2				
1 PLACE	±---	±---	DRAFT WHERE APPLICABLE MUST REMAIN WITHIN DIMENSIONS		THIS DRAWING CONTAINS INFORMATION THAT IS PROPRIETARY TO MOLEX INCORPORATED AND SHOULD NOT BE USED WITHOUT WRITTEN PERMISSION						

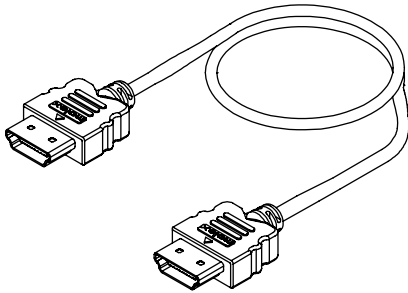
# High Definition Multimedia Interface\* (HDMI) Shielded I/O Cable Assembly/Adapter

**88768**

**HDMI to HDMI  
HDMI to DVI**

**88764**

**HDMI Adapters**



### Features and Benefits

- Compact, user-friendly design meets consumer equipment needs
- 5 Gbps bandwidth supports uncompressed audio/video in a single cable
- HDMI-DVI cables DVI backward compatible
- Fully shielded ESD protection

### Reference Information

Product Specification: PS-88768-001 and PS-88768-002  
Packaging: Bag or custom-specified  
Mates With: HDMI and DVI header  
Designed In: Millimeters

### Electrical

Voltage: 40V  
Current: 0.5A  
Contact Resistance: 30 milliohms max.  
Dielectric Withstanding Voltage: 300 AC (rms)  
Insulation Resistance: 100 Megohms min.

### Mechanical

Insertion Force: 44.1N max.  
Withdraw Force: 39.2N max.  
9.2N min.  
Durability: 10000 cycle

### Physical

Contact: Copper Alloy  
Plating: Contact Area—0.75µm (30µ") min. Gold  
Underplating: Nickel  
Wire Gauge: 28, 30 AWG  
Operating Temperature: 0 to +50°C

Cable Assembly Lengths (mm)	Wire Gauge (AWG)	Order No.	Description	Lead-free
1000	28	<a href="#">88768-3500</a>	HDMI to DVI	Yes
2000		<a href="#">88768-3510</a>		
3000		<a href="#">88768-3520</a>		
5000		<a href="#">88768-3530</a>		
1000	30	<a href="#">88768-3600</a>	HDMI to DVI	
2000		<a href="#">88768-3610</a>		
3000		<a href="#">88768-3620</a>		
5000		<a href="#">88768-3630</a>		
1000	28	<a href="#">88768-9800</a>	HDMI to HDMI	
2000		<a href="#">88768-9810</a>		
3000		<a href="#">88768-9820</a>		
5000		<a href="#">88768-9830</a>		
1000	30	<a href="#">88768-9900</a>	HDMI to HDMI	
2000		<a href="#">88768-9910</a>		
3000		<a href="#">88768-9920</a>		

Order No.	Adapters Description	Lead-free
<a href="#">88764-2000</a>	HDMI Male to DVI Female	Yes
<a href="#">88767-0600</a>	HDMI Female to DVI Male	
<a href="#">88764-5900</a>	HDMI Female to P&D (M1) Male	

\*High Definition Multimedia Interface and HDMI are trademarks of HDMI Licensing, LLC.